

HP Colour LaserJet Managed MFP E786 Series



Product guide



Unleash peak
productivity



HP WOLF SECURITY

Always on guard with
HP Wolf Security¹



Next-generation Flow
technology

Unleash peak productivity

Now you can accelerate your print and scan workflows to maximise business productivity, with the HP LaserJet Managed MFP E700 series.

The result: more time for your core business and less time waiting for prints and scans.



POWERED BY SYSTEM ON A CHIP

With 7x more computing power² than previous models, the HP LaserJet Managed MFP E700 series is a powerhouse of speed with all print, copy, scan, security and other display subsystems integrated into a single chip.



FAST SLEEP TO FIRST COPY OUTPUT TIME (FCOT)

Compared to previous generation printers, the HP LaserJet Managed MFP E700 series features accelerated FCOT time so your printer wakes up quickly from sleep mode as soon as you use the touchscreen to deliver your prints or copies faster.



UP TO 35 PPM PRINTING SPEED³

Meet tight deadlines, save time on everyday printing tasks and be ready for unexpected multi-print requests. HP delivers the speed needed for maximum productivity.



PROTECT YOUR INVESTMENT AND MAINTAIN PRODUCTIVITY

Stay productive and ensure you always have the latest optimised features across your fleet for years to come with upgradeable HP FutureSmart firmware. Get consistent, intuitive user controls across devices, seamlessly incorporate paper and digital content to improve workflows, and easily install updates on your schedule.



10.1-INCH COLOUR TOUCHSCREEN DISPLAY

Experience ultimate productivity with a vivid and intuitive display that helps make the HP LaserJet Managed MFP E700 series easy to use, no matter how you use your MFP.



Do more with next-generation Flow technology

Businesses grow and evolve – so should your MFP. The next generation of HP Flow technology makes that possible. Its cloud-based software provides flexible, customised cloud-connected solutions to optimise your print and scan workflows – today and as they change in the future.

ONE SCAN. MULTIPLE DESTINATIONS.

Sending documents to recipients in multiple destinations with multiple delivery requirements? Not a problem. With HP Flow technology, you can scan once and simply manage your files with the colour touchscreen for customised delivery options for each recipient – email, fax, SharePoint and even print a paper copy.⁴ HP saves you time and does it all in just one scan operation.

CUSTOMISED DIGITAL EDITING OF SCANNED DOCUMENTS

With Flow technology, you can digitally edit and personalise copies of the original using direct manipulation of scanned content at the MFP. Use the 10.1-inch colour touchscreen display to edit, mark up, redact and highlight comments for recipients.

FAST DUPLEX SCANNING

Keep pace with demand for digital documentation with fast 240 ipm⁵ duplex scanning and enhanced OCR capabilities. Plus, you can further increase performance with the optional Workflow accelerator card.⁶

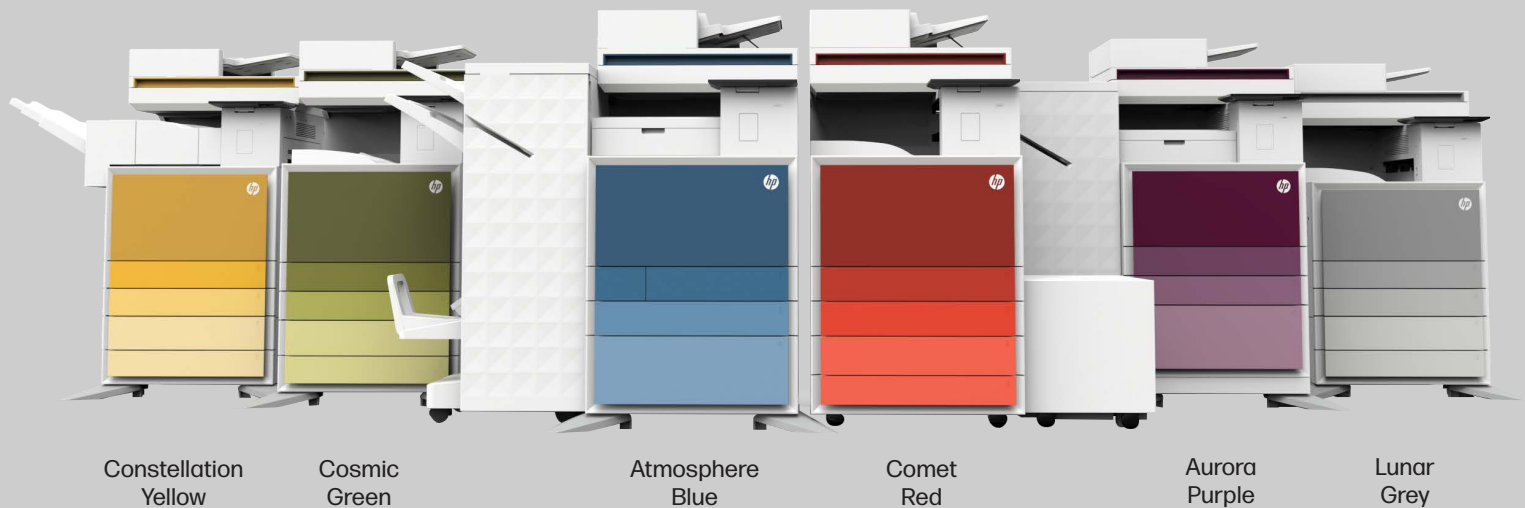
SCAN SMARTER. LOAD AND GO.

Flow's auto-sensing technology feature is your silent digital workflow assistant. Smart auto-sensing does it all, from picking the best image quality based on type (text or photo) and paper tone/colour, to detecting two-sided prints and automatic separation of scan jobs. The result: higher productivity and job management accuracy along with professional-looking prints that make your business look good.

Designed for impact

Today's workplace is more open and fluid, helping foster collaboration and communication among team members. Your HP printer can play a key role.

Make a visual statement at your workplace with six distinct, easy-to-install colour panels⁷ to suit your office decor, represent your brand and energise your space.



Better printing for a better planet

Save resources with our energy-efficient printing that meets EPEAT Gold, Blue Angel and Energy Star standards⁸, supporting HP's goal for carbon neutrality and a fully sustainable economy.

- **SUPPORT ZERO DEFORESTATION⁹** - The fibre-based packaging for this product, including the outer box and interior fibre-based cushions, is 100% sustainably sourced, meaning it's made from recycled or certified content.
- **DESIGNED TO ELIMINATE WASTE¹⁰** - Our devices are made with the planet in mind; with energy-efficient printing and toner cartridges with more than 59%¹¹ recycled cartridge content¹² and 90% recycled packaging content. Printing that puts the planet first.
- **BREAKTHROUGH TONER TECHNOLOGY** - With formulas that meet current indoor air quality standards, our ultra-low melt toner is efficient for both printing and the planet.¹³
- **REDUCE PAPER WASTE** - By using HP Pull/Pin printing solutions and duplex print as the default¹⁴ setting, our devices conserve paper wherever possible.
- **EXTEND PRODUCT LIFE** - Our durable modular designs and HP SDS predictive diagnostics help keep our products up and running longer.
- **EASY RECYCLING WITH HP PLANET PARTNERS¹⁵** - Our sustainable efforts don't stop when you stop printing. With HP Planet Partners, we provide a convenient way to recycle HP IT hardware and supplies after use.



Always on guard with HP Wolf Security¹

HP Managed MFPs are the world's most secure printing devices¹⁶ in the industry. They're always on the lookout, continually stopping threats while adapting to new ones. Only HP printers can automatically self-heal from attacks, so IT doesn't need to intervene. For peace of mind, HP Wolf Enterprise Security is included with every HP LaserJet Managed MFP E700 Series so you can feel protected whether you are collaborating on-site or via the cloud.

ALWAYS-ON PROTECTION

- HP Sure Start checks the BIOS/boot code at start-up to validate the integrity of the BIOS code
- Memory Shield™ active system monitoring with expanded memory protection from malware injection attacks
- HP Connection Inspector inspects outgoing network connections to stop suspicious requests such as malware
- Whitelisting checks firmware during start-up to help ensure it's good, authentic code - digitally signed by HP
- Receive instant notification of security issues via leading Security Information and Event Management (SIEM) tools such as Splunk, ArcSight, McAfee and SIEMonster

ALWAYS-ON DETECTION

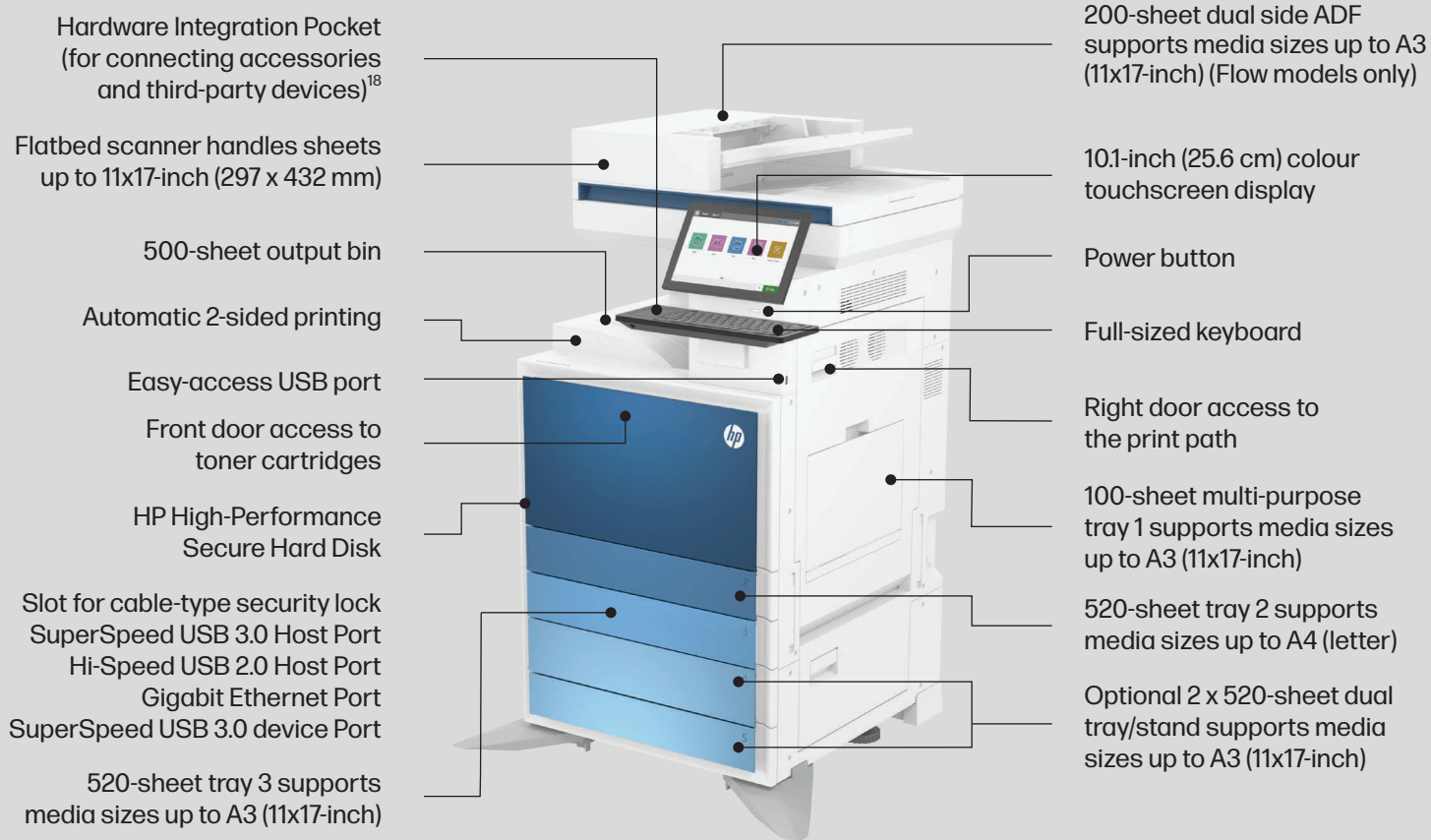
- Protects with zero-day detection of threats
- Prevents malware attacks by ensuring that the execution flow on the device cannot be altered
- Monitors the execution flow for potential zero-day attacks with Control Flow Integrity
- Self-heals and reboots to a safe state of operation when malware is detected
- Detects attacks in runtime memory via an integrated chip that provides hardware-level protection

ENTERPRISE-WIDE SECURITY

HP Security Manager¹⁷ offers an effective, policy-based approach to help secure HP printing and imaging devices. Easily set security configuration policies and automatically validate settings for every HP printer and MFP in your fleet.

Get to know the HP LaserJet Managed MFP E786 series

HP Colour LaserJet Managed Flow MFP E786z shown



Series at a glance



Model	Flow MFP E786z 25 ppm	Flow MFP E786z 30 ppm	Flow MFP E786z 35 ppm
Product number	5QJ94A	5QJ94A (Base) + 8EP56AAE (Speed licence)	5QJ94A (Base) + 8EP57AAE (Speed licence)
Functions	Print, copy and scan (fax and wireless optional) (all models)		
Print speed (A4 and letter, black and colour)	Up to 25 ppm	Up to 30 ppm	Up to 35 ppm
Scan speed (A4 and letter, black and colour)	120 ppm/240 ipm, simplex/duplex		
ADF capacity	200 sheets		
Input capacity	Standard: 1,140 sheets; Maximum: 3,140 sheets (all models)		
Advanced workflow features	HP EveryPage technology, ¹⁹ full-sized keyboard, embedded OCR, auto-orientation, auto-tone, auto-page-crop, document editing, auto paper colour removal, job separation		



Model	MFP E786dn 25 ppm	MFP E786dn 30 ppm	MFP E786dn 35 ppm
Product number	5QJ90A	5QJ90A (Base) + 8EP56AAE (Speed licence)	5QJ90A (Base) + 8EP57AAE (Speed licence)
Functions	Print, copy and scan (fax and wireless optional) (all models)		
Print speed (A4 and letter, black and colour)	Up to 25 ppm	Up to 30 ppm	Up to 35 ppm
Scan speed (A4 and letter, black and colour)	90 ppm/180 ipm, simplex/duplex		
ADF capacity	200 sheets		
Input capacity	Standard: 1,140 sheets; Maximum: 3,140 sheets (all models)		
Advanced workflow features	No		

E786z technical specifications

Functions	Print, copy, scan, fax (optional)			
Print speed ^{3,20}	Letter Black	Up to 25 ppm	Up to 30 ppm (with 8EP56AAE)	Up to 35 ppm (with 8EP57AAE)
	Letter Colour	Up to 25 ppm	Up to 30 ppm (with 8EP56AAE)	Up to 35 ppm (with 8EP57AAE)
	A4 Black	Up to 25 ppm	Up to 30 ppm (with 8EP56AAE)	Up to 35 ppm (with 8EP57AAE)
	A4 Colour	Up to 25 ppm	Up to 30 ppm (with 8EP56AAE)	Up to 35 ppm (with 8EP57AAE)
	First page out Letter Black	As fast as 11.1 sec	As fast as 9.4 sec (with 8EP56AAE)	As fast as 9.1 sec (with 8EP57AAE)
	First page out Letter Colour	As fast as 13.0 sec	As fast as 11.4 sec (with 8EP56AAE)	As fast as 10.8 sec (with 8EP57AAE)
	First page out A4 Black	As fast as 11.1 sec	As fast as 9.4 sec (with 8EP56AAE)	As fast as 9.1 sec (with 8EP57AAE)
	First page out A4 Colour	As fast as 13.0 sec	As fast as 11.4 sec (with 8EP56AAE)	As fast as 10.8 sec (with 8EP57AAE)
Print resolution	Black (best): Up to 1,200 x 1,200 dpi reduced speed; Black (normal): Up to 600 x 600 dpi; Black (fine lines): Up to 1200 x 1200 dpi; Colour (best): Up to 1,200 x 1,200 dpi reduced speed; Colour (normal): Up to 600 x 600 dpi; Colour (fine lines): Up to 1,200 x 1,200 dpi			
Print technology	Laser; Optical: Normal (600 x 600 4 bit), best (1,200 x 1,200 1 bit)			
Print cartridges number	4 (1 each black, cyan, magenta, yellow)			
Standard print languages	HP PCL 5c, HP PCL 6, HP Postscript level 3 emulation, PDF (v 1.7), AirPrint™ compatible			
Printer smart software features	Print preview, duplex printing, print multiple pages per sheet (2, 4, 6, 9, 16), collation, watermarks, store print jobs, easy-access USB			
Colour scanning	Yes			
Scan speed normal ⁵	Up to 120 ppm/240 ipm (b&w), up to 120 ppm/240 ipm (colour); Up to 120 ppm/240 ipm (b&w), up to 120 ppm/240 ipm (colour) Duplex: Up to 240 ipm (b&w), up to 240 ipm (colour); Up to 240 ipm (b&w), up to 240 ipm (colour)			
Scan type/technology	ADF; Flatbed/Platen Scanner CCD Digital-CIS			
Scan resolution	Hardware: Up to 600 x 600 dpi; Optical: Up to 600 x 600 dpi			
Scan file format	Hi-compression PDF; JPEG; MTIFF; PDF; PDF/A; RTF; TIFF; XPS			
Scan input modes	Front panel applications: Copy; fax; scan to email; scan to network folder; scan to USB; scan to job storage; Open Extensibility Platform (OXF), HP Workpath applications			
Scan size	ADF maximum: 297 x 864 mm; 11.7 x 34 in ADF minimum: 68 x 127 mm; 2.7 x 5 in Flatbed: 297 x 432 mm; 11.69 x 17 in			
Scanner advanced features	Embedded OCR; optimise text/picture (auto); scan to multi-destination; automatic tone; auto-orientation; multi-feed detection; document editing; auto paper colour removal; job separation (blank page, barcode); watermark; stamps			
Duplex ADF scanning	Yes			
ADF capacity	Standard, 200 sheets			
Twain version	Version 2.4			
Bit depth/greyscale levels	24-bit/256			
Digital sending standard features	Scan to email; save-to-network folder; save-to-USB drive; send to SharePoint; send to FTP; send to sFTP; send to LAN fax; send to internet fax; local address book; SMTP over SSL; auto colour sense; compact PDF; image adjustments (darkness, contrast, background clean-up, sharpness); optimised text/picture (auto, text, mixed, printed picture, photograph); content orientation; ID scan; job build; watermark; stamps; book mode scans; erase edges; image preview; blank page suppression; scan to multi-destination, embedded OCR; auto-tone, auto-orientation, autopage-crop; multi-feed detection; document editing; auto paper colour removal; job separation; automatically straighten			
Copy speed	Letter Black	Up to 25 cpm	Up to 30 cpm (with 8EP56AAE)	Up to 35 cpm (with 8EP57AAE)
	Letter Colour	Up to 25 cpm	Up to 30 cpm (with 8EP56AAE)	Up to 35 cpm (with 8EP57AAE)
	A4 Black	Up to 25 cpm	Up to 30 cpm (with 8EP56AAE)	Up to 35 cpm (with 8EP57AAE)
	A4 Colour	Up to 25 cpm	Up to 30 cpm (with 8EP56AAE)	Up to 35 cpm (with 8EP57AAE)
	Letter Black Duplex	Up to 18 cpm	Up to 22 cpm (with 8EP56AAE)	Up to 24 cpm (with 8EP57AAE)
	Letter Colour Duplex	Up to 25 ppm	Up to 30 ppm (with 8EP56AAE)	Up to 35 ppm (with 8EP57AAE)
	A4 Black Duplex	Up to 18 cpm	Up to 22 cpm (with 8EP56AAE)	Up to 24 cpm (with 8EP57AAE)
	A4 Colour Duplex	Up to 18 cpm	Up to 22 cpm (with 8EP56AAE)	Up to 24 cpm (with 8EP57AAE)
	First copy out Letter Black	As fast as 6.7 sec	As fast as 5.4 sec (with 8EP56AAE)	As fast as 4.8 sec (with 8EP57AAE)
	First copy out Letter Colour	As fast as 8.9 sec	As fast as 7.6 sec (with 8EP56AAE)	As fast as 6.8 sec (with 8EP57AAE)
	First copy out A4 Black	As fast as 6.7 sec	As fast as 5.4 sec (with 8EP56AAE)	As fast as 4.8 sec (with 8EP57AAE)
	First copy out A4 Colour	As fast as 8.9 sec	As fast as 7.6 sec (with 8EP56AAE)	As fast as 6.8 sec (with 8EP57AAE)
Copy resolution	Black (text and graphics): ; Up to 600 x 600 dpi; Colour (text and graphics): Up to 600 x 600 dpi			
Maximum number of copies	Up to 9,999 copies			
Copier resize	25 to 400%			
Copier settings	Booklet; collation; content orientation; crop; Edge Erase; ID scan; image adjustment; job build; job storage; N or Z-ordering; N-up; scalability; text/photo; two-sided copy; watermark; scan mode (book, 2-sided ID); stamps; image shift; image preview; paper selection; blank page suppression; automatically straighten; automatically detect colour/monochrome; auto tone; multi-feed detection; document editing; auto paper colour removal; job separation			
Fax speed	Up to: 33.6 kbps / Letter: 3 sec per page			

E786z technical specifications

Fax resolution	Black (best): Up to 300 x 300 dpi (400 x 400 dpi for received faxes only); Black (standard): 203 x 98 dpi			
Fax features	Fax memory: Up to 500 pages; Auto fax reduction supported: Yes Auto-redialling: Yes Fax delayed sending: No Distinctive ring detection supported: No No Fax forwarding supported: Yes Fax phone TAM interface supported: No Fax polling supported: Yes (poll to receive only) Fax telephone mode supported: No Junk barrier supported: Yes Maximum speed dialling numbers: Up to 1,000 numbers (each with 210 destinations) PC interface supported: Yes Remote retrieval capability supported: No Telephone handset supported: No			
Standard connectivity	1 Gigabit Ethernet 10/100/1000TX network; 1 Hardware Integration Pocket 2nd generation (HIP2); 1 Hi-Speed USB 2.0 (host); 1 SuperSpeed USB 3.0 (device); 1 SuperSpeed USB 3.0 (host)			
Network capabilities	Standard (built-in Gigabit 10/100/1000T Ethernet)			
Wireless capability	Optional, enabled with purchase of a hardware accessory			
Mobile printing capability	Apple AirPrint™; Mopria™ Certified; Wi-Fi® Direct Printing; HP Roam; NFC Touch-to-print (optional); PrinterOn Print			
Memory	Standard: 6 GB; Maximum: 6 GB			
Processor speed	Quad Core (1.6GHz), Dual Core (1.4GHz) / Storage: Standard, embedded 500 GB hard disk drive / Hard disk: Standard, HP LaserJet 500 GB Hard Disk Drive; AES 256 hardware encryption; secure erase capabilities (Secure File Erase-Temporary Job Files, Secure Erase-Job Data, Secure ATA Erase-Disk)			
Duty cycle (monthly)	Letter:	Up to 110,000 pages	Up to 130,000 pages (with 8EP56AAE)	Up to 150,000 pages (with 8EP57AAE)
	A4:	Up to 110,000 pages	Up to 130,000 pages (with 8EP56AAE)	Up to 150,000 pages (with 8EP57AAE)
Recommended monthly page volume	Up to 20,000			
Paper handling	Input capacities: Up to 1,140 sheets (Tray 1: up to 100 sheets; Tray 2: up to 520 sheets; Tray 3: up to 520 sheets) Standard; Up to 10 envelopes; Input capacities, max.: Up to 3,140 sheets; Output capacities: Up to 500 sheets Standard; Up to 100 sheets; Duplex options: Automatic; Envelope feeder: No; Standard paper trays: 3			
Media types supported	Plain, HP EcoEFICIENT, HP Matte 90g, Light 60-74g, Bond, Recycled, HP Matte 105g, HP Matte 120g, HP Soft Gloss 120g, HP Glossy 120g, Mid-Weight 96-110g, Heavy 111-130g, Mid-Wt Glossy 96-110g, Heavy Glossy 111-130g, HP Matte 150g, HP Glossy 150g, Extra Heavy 131-175g, Xhvy Glossy 131-175g, HP Matte 200g, card stock 176-220g, light paperboard 221-255g, paperboard 256-300g, colour transparency, labels, letterhead, envelope, preprinted, prepunched, coloured			
Media weight supported	Tray 1: 16 to 79.5 lb bond; Tray 2, 3: 16 to 58.5 lb bond			
Media sizes supported	Tray 1: Letter, Letter R, Legal, Executive, Statement, Oficio, 8.5 x 13, 11 x 17, 4 x 6, 5 x 7, 5 x 8, 10 x 15, 8k, 16k, envelope #9, Envelope #10, Envelope Monarch; Tray 2: Letter, Letter R, Legal, Executive, Statement, Oficio, 4 x 6, 5 x 7, 5 x 8, 16k; Tray 3: Letter, Letter R, Legal, Executive, Statement, Oficio, 11 x 17, 8k, 16k			
Media sizes custom	Tray 1: 3.86 x 5.83 to 11.69 x 17 in; Tray 2: 5.48 x 8.27 to 11.69 x 14.33 in; Tray 3: 5.48 x 8.27 to 11.69 x 17 in			
What's in the box	5QJ94A In-box materials; Installation guide; regulatory flyer; power cords; keyboard/overlay for Z model; label; drums.			
Replacement cartridges²¹	HP Black Managed LJ Toner Cartridge (ISO Yield 29,000) W9150MC, HP Cyan Managed LJ Toner Cartridge (ISO Yield 24,000) W9151MC, HP Yellow Managed LJ Toner Cartridge (ISO Yield 24,000) W9152MC, HP Magenta Managed LJ Toner Cartridge (ISO Yield 24,000) W9153MC. Toner cartridge availability differs by region. For more detail, please find your market datasheets.			
Product dimensions	W x D x H: 640.8 x 725.5 x 908.1 mm; 25.2 x 28.6 x 35.8 in Maximum: 1681 x 1196 x 1241 mm; 66.2 x 47.1 x 48.9 in			
Product weight	~84.2 kg; ~185.7 lb			
Warranty features	90-day parts-only warranty. Warranty and support options vary by product, country and local legal requirements. Contact your contractual vendor or go to hp.com/support to learn about HP's award-winning service and support options in your region.			
Energy star certified	Yes			
Ecolabels	EPEAT® registered; Blue Angel; IT ECO Declaration			
Control panel	10.1-in (25.65 cm) Colour Graphics Display (CGD) with touchscreen; rotating (adjustable angle) display; speaker			
Display description	10.1-in (25.65 cm) touchscreen, WXGA Colour Graphic Display (CGD)			
Software included	No software solutions are included in the box; only at http://hp.com http://123.hp.com			
Compatible operating systems	Windows Client OS (32/64 bit), Win10, Win11, Win7 Ultimate, Mobile OSs, iOS, Android, Apple macOSs, Apple macOS Catalina v10.15, Apple macOS Big Sur v11.0, Apple macOS Monterey v12.0, (all operating systems with the latest updates)			
Compatible network operating systems	Windows Server 2008 R2 64-bit, Windows Server 2012 64-bit, Windows Server 2012 R2 64-bit, Windows Server 2016 64-bit, Windows Server 2019 64-bit, Windows Server 2022 64-bit, Citrix Server 6.5, Citrix XenApp & XenDesktop 7.6, Novell iPrint server, Citrix Ready Kit Certification - Up to Citrix Server 718 for more information, see http://citrixready.citrix.com , Linux - For more information, see http://developers.hp.com/hp-linux-imaging-and-printing , Unix - For more information, see http://hp.com/go/unixmodelscripts , (All operating systems with the latest updates)			
Minimum system requirements	PC: 2 GB available hard disk space, internet connection, or USB port, internet browser. For additional OS hardware requirements, see microsoft.com ; Mac: 2 GB available hard drive space, internet connection, or USB port, internet browser. For additional OS hardware requirements, see apple.com			
Power	Power supply type: Internal (built-in) power supply; Power requirements: Input voltage: 100 to 127 VAC 50/60 Hz, 110 to 127 VAC 50/60 Hz, 220 to 240 VAC 50/60 Hz (not dual voltage, power supply varies by part number with # Option code identifier); Power consumption: 580 watts (25 ppm, printing), 670 watts (30 ppm, printing), 720 watts (35 ppm, printing), 32.0 watts (ready), 0.8 watts (sleep), 0.2 watts (auto-off), 0.2 watts (manual-off)			
Acoustics	Acoustic power emissions: 6.60 Bel(A), printing colour simplex A4 at 25ppm; 6.70 Bel(A), printing colour simplex A4 at 30ppm; 6.75 Bel(A), printing colour simplex A4 at 35ppm; Acoustic pressure emissions (active, printing): 50 dB(A), printing colour simplex A4 at 25 ppm; 51 dB(A), printing colour simplex A4 at 30 ppm; 52 dB(A), printing colour simplex A4 at 35 ppm; Acoustic pressure emissions (active scan): 56 dB(A), ADF scan A4 at 90 ipm; 58 dB(A), ADF scan A4 at 120 ipm; 53 dB(A), ADF scan A4 at 60 ipm			
Operating environment	Operating temperature range: 15 to 30°C; Recommended operating temperature: 15 to 30°C; Storage temperature range: -10 to 40°C; Operating humidity range: 20 to 80% RH; Recommended humidity operating range: 20 to 80% RH			

E786dn technical specifications

Functions	Print, copy, scan, fax (optional)			
Print speed^{3,20}	Letter Black Letter Colour A4 Black A4 Colour First page out Letter Black First page out Letter Colour First page out A4 Black First page out A4 Colour	Up to 25 ppm Up to 25 ppm Up to 25 ppm Up to 25 ppm As fast as 11.1 sec As fast as 13.0 sec As fast as 11.1 sec As fast as 13.0 sec	Up to 30 ppm (with 8EP56AAE) Up to 30 ppm (with 8EP56AAE) Up to 30 ppm (with 8EP56AAE) Up to 30 ppm (with 8EP56AAE) As fast as 9.4 sec (with 8EP56AAE) As fast as 11.4 sec (with 8EP56AAE) As fast as 9.4 sec (with 8EP56AAE) As fast as 11.4 sec (with 8EP56AAE)	Up to 35 ppm (with 8EP57AAE) Up to 35 ppm (with 8EP57AAE) Up to 35 ppm (with 8EP57AAE) Up to 35 ppm (with 8EP57AAE) As fast as 9.1 sec (with 8EP57AAE) As fast as 10.8 sec (with 8EP57AAE) As fast as 9.1 sec (with 8EP57AAE) As fast as 10.8 sec (with 8EP57AAE)
Print resolution	Black (best): Up to 1,200 x 1,200 dpi reduced speed; Black (normal): Up to 600 x 600 dpi; Black (fine lines): Up to 1200 x 1200 dpi; Colour (best): Up to 1,200 x 1,200 dpi reduced speed; Colour (normal): Up to 600 x 600 dpi; Colour (fine lines): Up to 1,200 x 1,200 dpi			
Print technology	Laser; Optical: Normal (600 x 600 4 bit); Best (1,200 x 1,200 1 bit)			
Print cartridges number	4 (1 each black, cyan, magenta, yellow)			
Standard print languages	HP PCL 5c, HP PCL 6, HP Postscript level 3 emulation, PDF (v 1.7), AirPrint™ compatible			
Printer smart software features	Print preview, duplex printing, print multiple pages per sheet (2, 4, 6, 9, 16), collation, watermarks, store print jobs, easy-access USB			
Colour scanning	Yes			
Scan speed normal⁵	Up to 90 ppm/180 ipm (b&w), up to 90 ppm/180 ipm (colour); Up to 90 ppm/180 ipm (b&w), up to 90 ppm/180 ipm (colour) Duplex: Up to 180 ipm (b&w), up to 180 ipm (colour); Up to 180 ipm (b&w), up to 180 ipm (colour)			
Scan type/technology	ADF; Flatbed/D-CIS; Platen Scanner (CCD)			
Scan resolution	Hardware: Up to 600 x 600 dpi; Optical: Up to 600 x 600 dpi			
Scan file format	Hi-compression PDF; JPEG; MTIFF; PDF; PDF/A; TIFF; XPS			
Scan input modes	Front panel applications: Copy; fax; scan to email; scan to network folder; scan to USB; scan to job storage; Open Extensibility Platform (OXF), HP Workpath applications			
Scan size	ADF maximum: 297 x 864 mm; 11.7 x 34 in ADF minimum: 68 x 127 mm; 2.7 x 5 in Flatbed: 297 x 432 mm; 11.69 x 17 in			
Duplex ADF scanning	Yes			
ADF capacity	Standard, 200 sheets			
Twain version	Version 2.4			
Bit depth/greyscale levels	24-bit/256			
Digital sending standard features	Scan to email; scan to network folder; scan to USB drive; scan to SharePoint; scan to FTP; scan to sFTP; scan to LAN fax; scan to internet fax; local address book; SMTP over SSL; automatically detect colour/monochrome; high compression PDF; image adjustments (darkness, contrast, background clean-up, sharpness); optimise text/picture (text, mixed, printed picture, photograph); content orientation; scan mode (book, 2-sided ID); erase edges; auto page crop; job build; image preview; blank page suppression; automatically straighten			
Copy speed	Letter Black Letter Colour A4 Black A4 Colour Letter Black Duplex Letter Colour Duplex A4 Black Duplex A4 Colour Duplex First copy out Letter Black First copy out Letter Colour First copy out A4 Black First copy out A4 Colour	Up to 25 cpm Up to 25 cpm Up to 25 cpm Up to 25 cpm Up to 18 cpm Up to 25 ppm Up to 18 cpm Up to 18 cpm As fast as 6.7 sec As fast as 8.9 sec As fast as 6.7 sec As fast as 8.9 sec	Up to 30 cpm (with 8EP56AAE) Up to 30 cpm (with 8EP56AAE) Up to 30 cpm (with 8EP56AAE) Up to 30 cpm (with 8EP56AAE) Up to 22 cpm (with 8EP56AAE) Up to 30 ppm (with 8EP56AAE) Up to 22 cpm (with 8EP56AAE) Up to 22 cpm (with 8EP56AAE) As fast as 5.4 sec (with 8EP56AAE) As fast as 7.6 sec (with 8EP56AAE) As fast as 5.4 sec (with 8EP56AAE) As fast as 7.6 sec (with 8EP56AAE)	Up to 35 cpm (with 8EP57AAE) Up to 35 cpm (with 8EP57AAE) Up to 35 cpm (with 8EP57AAE) Up to 35 cpm (with 8EP57AAE) Up to 24 cpm (with 8EP57AAE) Up to 35 ppm (with 8EP57AAE) Up to 24 cpm (with 8EP57AAE) Up to 24 cpm (with 8EP57AAE) As fast as 4.8 sec (with 8EP57AAE) As fast as 6.8 sec (with 8EP57AAE) As fast as 4.8 sec (with 8EP57AAE) As fast as 6.8 sec (with 8EP57AAE)
Copy resolution	Black (text and graphics): ; Up to 600 x 600 dpi; Colour (text and graphics): Up to 600 x 600 dpi			
Maximum number of copies	Up to 9,999 copies			
Copier resize	25 to 400%			
Copier settings	Booklet; collation; content orientation; Edge Erase; image adjustment; job build; N or Z-ordering; N-up; text/photo; two-sided copy; watermark; reduce/enlarge; scan mode (book, 2-sided ID); stamps; image overlay; image shift; image preview; paper selection; blank page suppression; scan to job storage; automatically straighten; automatically detect colour/monochrome			
Fax speed	Up to: 33.6 kbps / Letter: 3 sec per page			
Fax resolution	Black (best): Up to 300 x 300 dpi (400 x 400 dpi for received faxes only); Black (standard): 203 x 98 dpi			
Fax features	Fax memory: Up to 500 pages; Auto fax reduction supported: Yes Auto-redialling: Yes Fax delayed sending: No Distinctive ring detection supported: No Fax forwarding supported: Yes Fax phone TAM interface supported: No Fax polling supported: Yes (poll to receive only) Fax telephone mode supported: No Junk barrier supported: Yes Maximum speed dialling numbers: Up to 1,000 numbers (each with 210 destinations) PC interface supported: Yes Remote retrieval capability supported: No Telephone handset supported: No			

E786dn technical specifications

Standard connectivity	1 Gigabit Ethernet 10/100/1000T network; 1 Hardware Integration Pocket 2nd generation (HIP2); 1 Hi-Speed USB 2.0 (host); 1 SuperSpeed USB 3.0 (device); 1 SuperSpeed USB 3.0 (host)			
Network capabilities	Standard (built-in Gigabit 10/100/1000T Ethernet)			
Wireless capability	Optional, enabled with purchase of a hardware accessory			
Mobile printing capability	Apple AirPrint™; Mopria™ Certified; Wi-Fi® Direct Printing; HP Roam; NFC Touch-to-print (optional); PrinterOn Print			
Memory	Standard: 6 GB; Maximum: 6 GB			
Processor speed	Quad Core (1.6GHz), Dual Core (1.4GHz) / Storage: Standard, embedded 500 GB hard disk drive / Hard disk: Standard, HP LaserJet 500 GB Hard Disk Drive; AES 256 hardware encryption; secure erase capabilities (Secure File Erase-Temporary Job Files, Secure Erase-Job Data, Secure ATA Erase-Disk)			
Duty cycle (monthly)	Letter:	Up to 110,000 pages	Up to 130,000 pages (with 8EP56AAE)	Up to 150,000 pages (with 8EP57AAE)
	A4:	Up to 110,000 pages	Up to 130,000 pages (with 8EP56AAE)	Up to 150,000 pages (with 8EP57AAE)
Recommended monthly page volume	Up to 20,000			
Paper handling	Input capacities: Up to 1,140 sheets (Tray 1: up to 100 sheets; Tray 2: up to 520 sheets; Tray 3: up to 520 sheets) Standard; Up to 10 envelopes; Input capacities, max.: Up to 3,140 sheets; Output capacities: Up to 500 sheets Standard; Up to 100 sheets; Duplex options: Automatic; Envelope feeder: No; Standard paper trays: 3			
Media types supported	Plain, HP EcoEFCIENT, HP Matte 90g, Light 60-74g, Bond, Recycled, HP Matte 105g, HP Matte 120g, HP Soft Gloss 120g, HP Glossy 120g, Mid-Weight 96-110g, Heavy 111-130g, Mid-Wt Glossy 96-110g, Heavy Glossy 111-130g, HP Matte 150g, HP Glossy 150g, Extra Heavy 131-175g, Xhvy Glossy 131-175g, HP Matte 200g, card stock 76-220g, light paperboard 221-255g, paperboard 256-300g, colour transparency, labels, letterhead, envelope, preprinted, prepunched, coloured			
Media weight supported	Tray 1: 16 to 79.5 lb bond; Tray 2, 3: 16 to 58.5 lb bond			
Media sizes supported	Tray 1: Letter, Letter R, Legal, Executive, Statement, Oficio, 8.5 x 13, 11 x 17, 4 x 6, 5 x 7, 5 x 8, 10 x 15, 8k, 16k, envelope #9, Envelope #10, Envelope Monarch; Tray 2: Letter, Letter R, Legal, Executive, Statement, Oficio, 4 x 6, 5 x 7, 5 x 8, 16k; Tray 3: Letter, Letter R, Legal, Executive, Statement, Oficio, 11 x 17, 8k, 16k			
Media sizes custom	Tray 1: 3.86 x 5.83 to 11.69 x 17 in; Tray 2: 5.48 x 8.27 to 11.69 x 14.33 in; Tray 3: 5.48 x 8.27 to 11.69 x 17 in			
What's in the box	5QJ90A In-box materials; Installation guide; regulatory flyer; power cords; keyboard/overlay for Z model; label; drums.			
Replacement cartridges²¹	HP Black Managed LJ Toner Cartridge (ISO Yield 29,000) W9150MC; HP Cyan Managed LJ Toner Cartridge (ISO Yield 24,000) W9151MC; HP Yellow Managed LJ Toner Cartridge (ISO Yield 24,000) W9152MC; HP Magenta Managed LJ Toner Cartridge (ISO Yield 24,000) W9153MC Toner cartridge availability differs by region. For more detail, please find your market datasheets.			
Product dimensions	W x D x H: 585 x 646 x 908.1 mm; 23 x 25.4 x 35.8 in Maximum: 1681 x 1196 x 1241 mm; 66.2 x 47.1 x 48.9 in			
Product weight	~82.7 kg; ~182.3 lb			
Warranty features	90-day parts-only warranty. Warranty and support options vary by product, country and local legal requirements. Contact your contractual vendor or go to hp.com/support to learn about HP's award-winning service and support options in your region.			
Energy star certified	Yes			
Ecolabels	EPEAT® registered; Blue Angel; IT ECO Declaration			
Control panel	10.1-in (25.65 cm) Colour Graphics Display (CGD) with touchscreen; rotating (adjustable angle) display; Speaker			
Display description	10.1-in (25.65 cm) touchscreen, WXGA Colour Graphic Display (CGD)			
Software included	No software solutions are included in the box; only at http://hp.com http://123.hp.com			
Compatible operating systems	Windows Client OS (32/64 bit), Win10, Win11, Win7 Ultimate, Mobile OSs, iOS, Android, Apple macOSs, Apple macOS Catalina v10.15, Apple macOS Big Sur v11.0, Apple macOS Monterey v12.0, (all operating systems with the latest updates)			
Compatible network operating systems	Windows Server 2008 R2 64-bit, Windows Server 2012 64-bit, Windows Server 2012 R2 64-bit, Windows Server 2016 64-bit, Windows Server 2019 64-bit, Windows Server 2022 64-bit, Citrix Server 6.5, Citrix XenApp & XenDesktop 7.6, Novell iPrint server, Citrix Ready Kit Certification - Up to Citrix Server 7.18 for more information, see http://citrixready.citrix.com , Linux - For more information, see http://developers.hp.com/hp-linux-imaging-and-printing , Unix - For more information, see http://hp.com/go/unixmodelscripts , (All operating systems with the latest updates)			
Minimum system requirements	PC: 2 GB available hard disk space, internet connection, or USB port, internet browser. For additional OS hardware requirements, see microsoft.com; Mac: 2 GB available hard drive space, internet connection, or USB port, internet browser. For additional OS hardware requirements, see apple.com			
Power	Power supply type: Internal (built-in) power supply; Power requirements: Input voltage: 100 to 127 VAC 50/60 Hz, 110 to 127 VAC 50/60 Hz, 220 to 240 VAC 50/60 Hz (not dual voltage, power supply varies by part number with # Option code identifier); Power consumption: 580 watts (25 ppm, printing), 670 watts (30 ppm, printing), 720 watts (35 ppm, printing), 32.0 watts (ready), 0.8 watts (sleep), 0.2 watts (auto-off), 0.2 watts (manual-off)			
Acoustics	Acoustic power emissions: 6.60 Bel(A), printing colour simplex A4 at 25ppm; 6.70 Bel(A), printing colour simplex A4 at 30ppm; 6.75 Bel(A), printing colour simplex A4 at 35ppm; Acoustic pressure emissions (active, printing): 50 dB(A), printing colour simplex A4 at 25 ppm; 51 dB(A), printing colour simplex A4 at 30 ppm; 52 dB(A), printing colour simplex A4 at 35 ppm; Acoustic pressure emissions (active scan): 56 dB(A), ADF scan A4 at 90 ipm; 58 dB(A), ADF scan A4 at 120 ipm; 53 dB(A), ADF scan A4 at 60 ipm			
Operating environment	Operating temperature range: 15 to 30°C; Recommended operating temperature: 15 to 30°C; Storage temperature range: -10 to 40°C; Operating humidity range: 20 to 80% RH; Recommended humidity operating range: 20 to 80% RH			

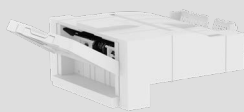
E786 Accessories²²

Accessory description	Accessory SKU #
HP LaserJet InnerFinisher 2/3 Hole Punch	155P7A
HP LaserJet InnerFinisher 2/4 Hole Punch	155P8A
HP Colour LaserJet Workgroup Lunar Grey Colour Panel	190A0A
HP LaserJet Workgroup 2x520-sheet Paper Tray/Stand Lunar Grey Colour Panel	190A6A
HP LaserJet Workgroup High Capacity Paper Tray/Stand Lunar Grey Colour Panel	190A7A
HP LaserJet Workgroup Stand Lunar Grey Colour Panel	190A9A
HP Colour LaserJet Workgroup Comet Red Colour Panel	190B0A
HP LaserJet Workgroup 2x520-sheet Paper Tray/Stand Comet Red Colour Panel	190B6A
HP LaserJet Workgroup High Capacity Paper Tray/Stand Comet Red Colour Panel	190B7A
HP LaserJet Workgroup Stand Comet Red Colour Panel	190B9A
HP Colour LaserJet Workgroup Cosmic Green Colour Panel	190C0A
HP LaserJet Workgroup 2x520-sheet Paper Tray/Stand Cosmic Green Colour Panel	190C6A
HP LaserJet Workgroup High Capacity Paper Tray/Stand Cosmic Green Colour Panel	190C7A
HP LaserJet Workgroup Stand Cosmic Green Colour Panel	190C9A
HP Colour LaserJet Workgroup Constellation Yellow Colour Panel	190D0A
HP LaserJet Workgroup 2x520-sheet Paper Tray/Stand Constellation Yellow Colour Panel	190D6A
HP LaserJet Workgroup High Capacity Paper Tray/Stand Constellation Yellow Colour Panel	190D7A
HP LaserJet Workgroup Stand Constellation Yellow Colour Panel	190D9A
HP Colour LaserJet Workgroup Aurora Purple Colour Panel	190F0A
HP LaserJet Workgroup 2x520-sheet Paper Tray/Stand Aurora Purple Colour Panel	190F6A
HP LaserJet Workgroup High Capacity Paper Tray/Stand Aurora Purple Colour Panel	190F7A
HP LaserJet Workgroup Stand Aurora Purple Colour Panel	190F9A
HP Removable Hard Drive Enclosure	2NR12A
HP Accessibility Kit	2TD64A
HP Jetdirect 3100w BLE/NFC/Wireless Accessory	3JN69A
HP Printing Voice Assistant	478C2A
HP Legic Secure USB Reader	4QL32A
Internal USB Expansion Kit	4XN67A
HP MFP 810 Analogue Dual Fax	5QK14A
HP LaserJet 2x520-sheet Workgroup Paper Tray/Stand	6GW46A
HP LaserJet 2000 sheet Workgroup High Capacity Paper Tray/Stand	6GW48A
HP LaserJet Inner Finisher	6GW49A
HP LaserJet Booklet Finisher	6GW51A
HP LaserJet Workgroup Job Separator	6GW52A
HP LaserJet Workgroup Stand	6GW54A
HP LaserJet Stapler/Stacker Finisher	6GW55A
HP 500GB CCC, FIPS, TAA Hard Disk Drive	6HN31A
HP MFP 811 Analogue Dual Fax	7ZA07A
HP MFP 800 Analogue Single Fax	7ZA08A
HP MFP 801 Analogue Single Fax	7ZA09A
HP Jetdirect LAN Accessory	8FP31A
HP 500GB CCC, FIPS Hard Disk Drive	9EQ11A
HP Foreign Interface Harness	B5L31A
HP SmartCard NIPRNet Solution for US Government	CC543B
HP SmartCard SIPRNet Solution for US Government	F8B30A
HP USB Universal Card Reader	X3D03A
HP LaserJet Hole Punch 2/3 Accessory	Y1G10A
HP LaserJet Inner/Booklet Staples	Y1G13A
HP LaserJet Stapler/Stacker Finisher Staples	Y1G14A
HP LaserJet Paper Tray Heaters Accessory	Y1G22A
HP LaserJet Second Exit Accessory	Y1G23A
HP HIP2 Keystroke Reader	Y7C05A
HP SIM for HID iClass for HIP2 Reader	Y7C07A
HP Colour LaserJet Managed MFP E786 25 to 30 ppm Licence	8EP56AAE
HP Colour LaserJet Managed MFP E786 25 to 35 ppm Licence	8EP57AAE
HP Colour LaserJet Managed MFP E786 30 to 35 ppm Licence	8LB46AAE

Configuration

HP Colour LaserJet Managed MFP E786 series

Select only one finisher accessory:
Recommended²³



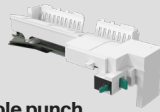
Inner finisher (6GW49A)

Top tray:

- Up to 50 sheets (stack)
- Media size: up to A3 (11 x 17 in)
- Media weight: 60 to 300 gsm (16 to 79 lb)

Main tray:

- Up to 500 sheets (sort/stack/staple/punch)
- Media size up to A3 (11 x 17 in)
- Media weight: 60 to 256 gsm (16 to 68 lb)



2/3 Hole punch

- For Booklet or Stapler/stapler finisher (shown above): Y1G10A (2/3), Y1G11A (2/4), Y1G12A (Swedish)
- For Inner finisher: 155P7A (2/3), 155P8A (2/4), 155P9A (Swedish)



Staples (5,000)

- For Inner finisher or Booklet finisher: Y1G13A
- For Stapler/stapler finisher or Booklet finisher: Y1G14A



Booklet finisher (6GW51A)

Top tray:

- Up to 250 sheets (stack/punch)
- Media size: up to A3 (11 x 17 in)
- Media weight: 60 to 300 gsm (16 to 79 lb)

Main tray:

- Up to 2,000 sheets (sort/stack/staple/punch)
- Media size: up to A3 (11 x 17 in)
- Media weight: 60 to 300 gsm (16 to 79 lb)

Booklet tray:

- ~5 sets of 25 sheets each (booklet)
- C-fold, V-fold



Stapler/stapler finisher (6GW55A)

Top tray:

- Up to 250 sheets (stack/punch)
- Media size: up to A3 (11 x 17 in)
- Media weight: 60 to 300 gsm (16 to 79 lb)

Main tray:

- Up to 3,000 sheets (sort/stack/staple/punch)
- Media size: up to A3 (11 x 17 in)
- Media weight: 60 to 300 gsm (16 to 79 lb)



Job separator (6GW52A)

- Up to 125 sheets
- Media size: up to A3 (11 x 17 in)
- Media weight: 60 to 300 gsm (16 to 79 lb)



Standard on DN models:

200-sheet ADF

- Single-pass, 2-sided scanning
- Scans up to 90 ppm, simplex and 180 ipm, duplex
- Media size: up to A3 (11 x 17 in)
- Media weight: 45 to 199 gsm (12 to 53 lb)

100-sheet multi-purpose tray 1

- Media size: up to A3 (11 x 17 in)
- Media weight: 60 to 300 gsm (16 to 79 lb)

520-sheet tray 2

- Media size: up to B4 (legal)
- Media weight: 60 to 220 gsm (16 to 58 lb)

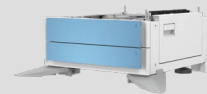
520-sheet tray 3

- Media size: up to A3 (11 x 17 in)
- Media weight: 60 to 220 gsm (16 to 58 lb)

Select input accessory:
Requirements vary by region

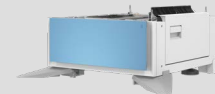


Stand (6GW54A)



2x520-sheet paper tray/stand (6GW46A)

- Tray 1: up to 520 sheets
- Tray 2: up to 520 sheets
- Media size: up to A3 (11 x 17 in)
- Media weight: 60 to 220 gsm (16 to 58 lb)



2,000-sheet high-capacity paper tray/stand (6GW48A)

- Up to 2,000 sheets
- Media size: up to A4 (letter)
- Media weight: 60 to 176 gsm (16 to 47 lb)



Tray heater 110V (Y1G22A)

Tray heater 220V (Y1G22A)

Helps reduce paper jams in high-humidity environments.

Optional; may choose one. If 2x520-sheet paper tray/stand or 2,000-sheet high-capacity paper tray/stand is selected, one additional tray heater may be selected.

Paper handling accessories

HP Colour LaserJet Managed MFP E786 series



Stand (6GW54A)



2x520-sheet paper tray/stand (6GW46A)



2,000-sheet high-capacity paper tray/stand (6GW48A)

Required:

Requirements vary by region; only one can be added at a time.

Input capacity: N/A

Tray 1: up to 520 sheets
Tray 2: up to 520 sheets

Up to 2,000 sheets



Inner finisher (6GW49A)



Stapler/stacker finisher (6GW55A)



Booklet finisher (6GW51A)

Top tray: up to 50 sheets
Main (finishing) tray: up to 500 sheets

Top tray: up to 250 sheets
Main (finishing) tray: up to 3,000 sheets

Top tray: up to 250 sheets
Main (finishing) tray: up to 2,000 sheets
Booklet tray: ~5 sets of 25 sheets each

One finisher accessory is recommended; only one can be added at a time.²³

Staples up to 50 sheets

Staples up to 65 sheets

Staples up to 65 sheets

Disclaimers and trademarks

Legal footnotes

1. HP Security is now HP Wolf Security. Security features vary by platform; please see the product data sheet for details.
2. DMIPS comparison based on main system processor core on predecessor comparison; Managed E876/E825/E778/E731/E774/E724 series vs Managed E800/E700 series product platforms.
3. Measured using ISO/IEC 24734, excludes first set of test documents. For more information, see <http://www.hp.com/go/printerclaims> Exact speed varies depending on the system configuration, software application, driver and document complexity. E786 series models can print up to 35 ppm.
4. Management of customised delivery options are only available with the optional Workflow accelerator card; availability expected in January 2023.
5. Scan speeds measured from ADF. Actual processing speeds may vary depending on scan resolution, network conditions, computer performance and application software. Measured using standards found at: http://standards.iso.org/ittf/PubliclyAvailableStandards/SC28_Test_Pages/
6. Workflow Accelerator card, 6HN30A will be available in January 2023.
7. Colour panels are optional and availability may vary. Check with your HP Reseller for details.
8. HP voluntarily designs and tests its printing systems to prevent emissions that exceed Blue Angel and EPEAT eco-label guidelines. EPEAT® registered where applicable. EPEAT registration varies by country. See <http://www.epeat.net> for registration status by country.
9. 100% outer fibre-based packaging and internal fibre-based cushions made from sustainably sourced certified and recycled fibres.
10. 100% of Original HP Toner Cartridges contain between 1-77% post-consumer or post-industrial recycled content. Does not include toner bottles or other products not listed.
11. Recycled content 100% of Original HP Toner Cartridges contain between 1-77% post-consumer or post-industrial recycled content. Does not include toner bottles or other products not listed. See hp.com/go/TonerRecycledContent for list. Hardware based: Post-consumer recycled is based on the definition set in the EPEAT standard for imaging equipment, IEEE 1680.2, and is expressed as percentage of the total plastic weight.
12. See hp.com/TonerRecycledContent for list of individual supply percentages for the Original HP Toner supply use of recycled content.
13. HP printer, HP paper and Original HP supply - Blue Angel DE-UZ 219 Emissions Criteria.
14. Dependent upon country setup specifications.
15. HP Planet Partners Programme availability varies. For more information, visit hp.com/hprecycle
16. HP's most advanced embedded security features are available on HP Managed and Enterprise devices with HP FutureSmart firmware 4.5 or above. Claim based on HP review of 2021 published features of competitive in-class printers. Only HP offers a combination of security features to automatically detect, stop and recover from attacks with a self-healing reboot, in line with NIST SP 800-193 Guidelines for device cyber resiliency. For a list of compatible products, visit hp.com/go/PrintersThatProtect For more information, visit hp.com/go/PrinterSecurityClaims
17. HP Security Manager must be purchased separately.
18. Hardware Integration Pocket Solutions deployed through the Hardware Integration Pocket (HIP) may require additional purchase.
19. HP EveryPage Technology is powered by ultrasonic multi-feed detection.
20. Measured using ISO/IEC 17629. For more information, see <http://www.hp.com/go/printerclaims>. Exact speed varies depending on the system configuration, software application, driver and document complexity.
21. Approximate average yield based on ISO/IEC 19798. Actual yield varies considerably based on content of printed pages and other factors. For details, see <http://www.hp.com/go/learnaboutequipment>
22. Accessories vary by region.
23. Requires selection of HP LaserJet Second Exit (Y1G23A).



HP Color LaserJet Managed MFP E786dn Printer Series



Powerful. Flexible. Secure.

Change is the only constant in business. Transform your business with a printer that can be upgraded over time to expand capabilities. With HP's most secure printers¹ you'll stay secure and simplify fleet management for busy IT pros.



Unleash peak productivity

- Tackle anything with our powerful CPU. Maximize your productivity and increase your overall print performance by copying, scanning and printing documents of all sizes at virtually full speed.
- Easily enable workflows across your fleet with a consistent user experience and intuitive, tablet-like icons on the 10.1-inch color touchscreen display.
- Maintain productivity and stay up to date on the latest features across your fleet with upgradeable HP FutureSmart firmware.²
- Centralize control of your printing environment with HP Web Jetadmin—and help build business efficiency.³

Customizable solutions built to last

- Make your day-to-day easier by customizing your print experience with cloud-connected HP Workpath apps that let you access personalized content, integrate paper and digital workflows.⁴
- Unleash your creativity and match any office décor with modern designs and the option of five customizable color panels.
- Maintain productivity and stay up to date on the latest features across your fleet with upgradeable HP FutureSmart firmware.²
- Make your day-to-day easier by customizing your print experience with cloud-connected HP Workpath apps that let you access personalized content, integrate paper and digital workflows.⁴

Always on guard with HP Wolf Security⁵

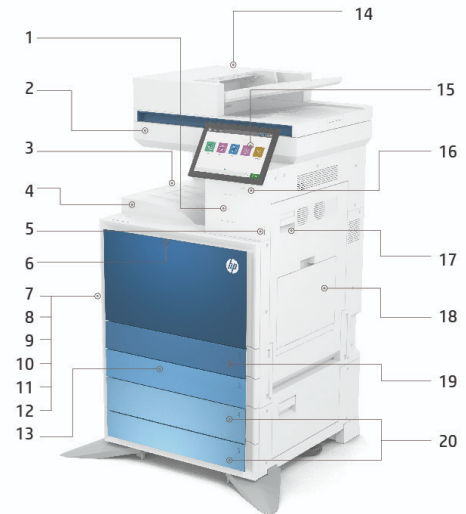
- With HP Sure Start always working behind the scenes, the operating code (BIOS) is automatically checked during start-up and repairs itself if compromised.
- The printer's outgoing network connections are inspected to stop suspicious requests and thwart malware so you can stay connected and in the clear.
- Run-time intrusion detection is always on guard. Common Criteria certified⁶ to continually monitor memory activity to keep you safe, detecting and stopping attacks in real time.
- HP Memory Shield™ with active system monitoring is an embedded security feature that helps prevent a wide variety of malware attacks from redirecting the execution flow of a program.

Better printing, for a better planet

- The fiber-based packaging, including outer box and interior fiber-based cushions, for this product is 100% sustainably sourced, meaning it's made from recycled or certified content.⁷
- Our devices are made with the planet in mind with energy-efficient printing and toner cartridges made from more than 57% recycled plastic.⁸ Printing that puts the planet first.
- Our improved energy efficient designs meet the rigorous criteria of EPEAT Gold, Energy Star, and Blue Angel.⁹
- With formulas that meet current indoor air quality standards, our ultra-low melt toner is efficient for both printing and the planet.¹⁰

Product walkaround

1. Hardware Integration Pocket (for connecting accessories and third-party devices)¹
2. Flatbed scanner handles sheets up to A3 (297 x 432 mm)
3. 500-sheet output bin
4. Automatic two-sided printing
5. Easy-access USB port²
6. Front door access to toner cartridges
7. HP High-Performance Secure Hard Disk
8. Slot for cable-type security lock
9. SuperSpeed USB 3.0 Host Port
10. Hi-Speed USB 2.0 Host Port
11. Gigabit Ethernet Port
12. SuperSpeed USB 3.0 device port
13. 520-sheet tray 3 supports media sizes up to A3
14. 200-sheet dual side ADF supports media sizes up to A3
15. 25.6 cm touchscreen display
16. Power button
17. Right door access to the print path
18. 100-sheet multipurpose tray 1 supports media sizes up to A3
19. 520-sheet tray 2 supports media sizes up to A4
20. Optional 2 x 520-sheet dual tray/stand supports media sizes up to A3



Series at a glance

Model	HP Color LaserJet Managed MFP E786dn		
Product number	5QJ90A	5QJ90A (Base) + 8EP56AAE (Speed license)	5QJ90A (Base) + 8EP57AAE (Speed license)
Print speed (A4 and letter, black and color) ³	Up to 25 ppm	Up to 30 ppm	Up to 35 ppm
Scan speed (A4 and letter, black and color) ⁴	90 ppm/180 ipm, simplex/duplex		
Functions	Print, copy, and scan (fax and wireless optional) (all models)		
ADF capacity	200 sheets		
Input capacity	Standard: 1,140 sheets; Maximum: 3,140 sheets (all models)		
Advanced workflow features	No		

¹ Solutions deployed through the Hardware Integration Pocket (HIP) may require additional purchase.

² An administrator must enable the easy-access USB port before use.

³ Measured using ISO/IEC 24734, excludes first set of test documents. For more information, see hp.com/go/printerclaims. Exact speed varies depending on the system configuration, software application, driver, and document complexity.

⁴ Scan speeds measured from ADF. Actual processing speeds may vary depending on scan resolution, network conditions, computer performance, and application software.

Top features

Get more done faster with printing, scanning and copying speeds, maximum uptime – powered by HP's custom designed quad-core processor..

Optimize your workflows and help increase productivity with upgradeable hardware options and scalable solutions to support your workforce for today and tomorrow.

HP Wolf Enterprise Security provides the world's most secure printing through industry leading multi-layer, self-healing security that protects, detects, and adapts to new threats¹. We keep trouble out so you can keep your business running.

Save resources with our energy efficient printing that meets EPEAT Gold, Blue Angel and Energy Star standards⁹; supporting HP's goal for carbon neutrality and a fully sustainable economy.

Services and Solutions

Service and Support	<p>U03GVE HP 1 year Next Business Day with Defective Media Retention Service for Color LaserJet Managed MFP E786xx</p> <p>U03GWE HP 3 year Next Business Day with Defective Media Retention Service for Color LaserJet Managed MFP E786xx</p> <p>U03GXE HP 4 year Next Business Day with Defective Media Retention Service for Color LaserJet Managed MFP E786xx</p> <p>U03GYE HP 5 year Next Business Day with Defective Media Retention Service for Color LaserJet Managed MFP E786xx</p> <p>U03H6PE HP 1 year Post Warranty Next Business Day with Defective Media Retention Service for Color LaserJet Managed MFP E786xx</p> <p>U03H7PE HP 2 year Post Warranty Next Business Day with Defective Media Retention Service for Color LaserJet Managed MFP E786xx</p> <p>U03H2E HP 1 year Parts Exchange Service for Color LaserJet Managed MFP E786xx (Managed Component Only)</p> <p>U03H3E HP 3 year Parts Exchange Service for Color LaserJet Managed MFP E786xx (Managed Component Only)</p> <p>U03H4E HP 4 year Parts Exchange Service for Color LaserJet Managed MFP E786xx (Managed Component Only)</p> <p>U03H5E HP 5 year Parts Exchange Service for Color LaserJet Managed MFP E786xx (Managed Component Only)</p> <p>U03HBPE HP 1 year Post Warranty Parts Exchange Service for Color LaserJet Managed MFP E786xx (Managed Component Only)</p> <p>U03HCPE HP 2 year Post Warranty Parts Exchange Service for Color LaserJet Managed MFP E786xx (Managed Component Only)</p>
Solutions	<p>Security: HP Access Control; HP Security Manager; HP Advance; HP Secure Print and Insights</p> <p>Mobile and universal print: HP Universal Print Driver (UPD); HP Print for Chrome Extension; HP Smart UPD; HP For Universal Print Workpath App</p> <p>Management: HP Web JetAdmin; HP Smart Device Services (SDS); Embedded Web Server; HP Custom Color Manager; HP Command Center; HP Smart Printer Administrator's Resource Kit</p>

Accessories	<p> 190A0A HP Color LaserJet Workgroup Lunar Gray Color Panel 190A3A HP LaserJet Department Lunar Gray Color Panel 190A6A HP LaserJet Workgroup 2x520 sheet Paper Tray/Stand Lunar Gray Color Panel 190A7A HP LaserJet Workgroup High Capacity Paper Tray/Stand Lunar Gray Color Panel 190A9A HP LaserJet Workgroup Stand Lunar Gray Color Panel 190B0A HP Color LaserJet Workgroup Comet Red Color Panel 190B3A HP LaserJet Department Comet Red Color Panel 190B6A HP LaserJet Workgroup 2x520 sheet Paper Tray/Stand Comet Red Color Panel 190B7A HP LaserJet Workgroup High Capacity Paper Tray/Stand Comet Red Color Panel 190B9A HP LaserJet Workgroup Stand Comet Red Color Panel 190C0A HP Color LaserJet Workgroup Cosmic Green Color Panel 190C3A HP LaserJet Department Cosmic Green Color Panel 190C6A HP LaserJet Workgroup 2x520 sheet Paper Tray/Stand Cosmic Green Color Panel 190C7A HP LaserJet Workgroup High Capacity Paper Tray/Stand Cosmic Green Color Panel 190C9A HP LaserJet Workgroup Stand Cosmic Green Color Panel 190D0A HP Color LaserJet Workgroup Constellation Yellow Color Panel 190D3A HP LaserJet Department Constellation Yellow Color Panel 190D6A HP LaserJet Workgroup 2x520 sheet Paper Tray/Stand Constellation Yellow Color Panel 190D7A HP LaserJet Workgroup High Capacity Paper Tray/Stand Constellation Yellow Color Panel 190D9A HP LaserJet Workgroup Stand Constellation Yellow Color Panel 190F0A HP Color LaserJet Workgroup Aurora Purple Color Panel 190F3A HP LaserJet Department Aurora Purple Color Panel 190F6A HP LaserJet Workgroup 2x520 sheet Paper Tray/Stand Aurora Purple Color Panel 190F7A HP LaserJet Workgroup High Capacity Paper Tray/Stand Aurora Purple Color Panel 190F9A HP LaserJet Workgroup Stand Aurora Purple Color Panel 2MU47A HP Accessibility Assistant 2NR12A HP Removable Hard Drive Enclosure 2TD64A HP Accessibility Kit 3JN69A HP Jetdirect 3100w BLE/NFC/Wireless Accessory 478C2A HP Printing Voice Assistant 4QL32A HP Legic Secure USB Reader 5QK14A HP MFP 810 Analog Dual Fax 6GW46A HP LaserJet 2x520 sheet Workgroup Paper Tray/Stand 6GW48A HP LaserJet 2000 sheet Workgroup High Capacity Paper Tray/Stand 6GW52A HP LaserJet Workgroup Job Separator 6GW54A HP LaserJet Workgroup Stand 7ZA07A HP MFP 811 Analog Dual Fax 7ZA08A HP MFP 800 Analog Single Fax 7ZA09A HP MFP 801 Analog Single Fax 8FP31A HP Jetdirect LAN Accessory B5L31A HP Foreign Interface Harness X3D03A HP USB Universal Card Reader Y1G11A HP LaserJet Hole Punch 2/4 Accessory Y1G12A HP LaserJet Hole Punch Swedish Accessory Y1G13A HP LaserJet Inner/Booklet Staples Y1G22A HP LaserJet Paper Tray Heaters Accessory Y1G23A HP LaserJet Second Exit Accessory Y7C05A HP HIP2 Keystroke Reader Y7C07A HP SIM for HID iClass for HIP2 Reader </p>
Speed Licenses	<p> 8EP56AAE HP Color LaserJet Managed MFP E786 25 to 30ppm License 8EP57AAE HP Color LaserJet Managed MFP E786 25 to 35ppm License 8LB46AAE HP Color LaserJet Managed MFP E786 30 to 35ppm License </p>
Supplies	<p> W9140MC HP W9140MC Black Managed LaserJet Toner Cartridge W9141MC HP W9141MC Cyan Managed LaserJet Toner Cartridge W9142MC HP W9142MC Yellow Managed LaserJet Toner Cartridge W9143MC HP W9143MC Magenta Managed LaserJet Toner Cartridge W9150MC HP W9150MC High Yield Black Managed LaserJet Toner Cartridge W9151MC HP W9151MC High Yield Cyan Managed LaserJet Toner Cartridge W9152MC HP W9152MC High Yield Yellow Managed LaserJet Toner Cartridge W9153MC HP W9153MC High Yield Magenta Managed LaserJet Toner Cartridge </p>

* HP LaserJet Workflow Accelerator Card, 6HN30A will be available in January 2023.

Technical specifications

Functions	Print, copy, scan, fax (optional)			
Print speed ^{1,2}	A4 Black	Up to 25 ppm	Up to 30 ppm (with 8EP56AAE)	Up to 35 ppm (with 8EP57AAE)
	A4 Color	Up to 25 ppm	Up to 30 ppm (with 8EP56AAE)	Up to 35 ppm (with 8EP57AAE)
	First page out A4 Black	As fast as 11.1 sec	As fast as 9.4 sec (with 8EP56AAE)	As fast as 9.1 sec (with 8EP57AAE)
	First page out A4 Color	As fast as 13.0 sec	As fast as 11.4 sec (with 8EP56AAE)	As fast as 10.8 sec (with 8EP57AAE)
Print resolution	Black (best): Up to 1200 x 1200 dpi reduced speed; Black (normal): Up to 600 x 600 dpi; Black (fine lines): Up to 1200 x 1200 dpi; Color (best): Up to 1200 x 1200 dpi reduced speed; Color (normal): Up to 600 x 600 dpi; Color (fine lines): Up to 1200 x 1200 dpi			
Print technology	Laser; Optical: Normal (600 x 600 4 bit); Best (1200 x 1200 1 bit)			
Print cartridges number	4 (1 each black, cyan, magenta, yellow)			
Standard print languages	HP PCL 5c, HP PCL 6, HP Postscript level 3 emulation, PDF (v 1.7), AirPrint™ compatible			
Printer smart software features	Print preview, duplex printing, print multiple pages per sheet (2, 4, 6, 9, 16), collation, watermarks, store print jobs, easy-access USB			
Color scanning	Yes			
Scan speed Normal ³	Up to 90 ppm/180 ipm (b&w), up to 90 ppm/180 ipm (color) Duplex: Up to 180 ipm (b&w), up to 180 ipm (color)			
Scan type / Technology	ADF; Flatbed / D-CIS; Platen Scanner (CCD)			
Scan resolution	Hardware: Up to 600 x 600 dpi; Optical: Up to 600 x 600 dpi			
Scan file format	Hi-Compression PDF; JPEG; MTIFF; PDF; PDF/A; TIFF; XPS			
Scan input modes	Front panel applications: Copy; Fax; Scan to Email; Scan to Network Folder; Scan to USB; Scan to Job Storage; Open Extensibility Platform (OXP), HP Workpath applications			
Scan Size	ADF Maximum: 297 x 420 mm; ADF Minimum: 68 x 127 mm; Flatbed: 297 x 432 mm;			
Duplex ADF scanning	Yes, single pass duplex scanning			
ADF capacity	Standard, 200 sheets			
Twain version	Version 2.4			
Bit depth / Grayscale levels	24-bit/256			
Digital sending standard features	Scan to Email; scan to network folder; scan to USB drive; scan to SharePoint; scan to FTP; scan to sFTP; scan to LAN fax; scan to Internet Fax; local address book; SMTP over SSL; automatically detect color/monochrome; high compression PDF; image adjustments (darkness, contrast, background cleanup, sharpness); optimize text/picture (text, mixed, printed picture, photograph); content orientation; scan mode (book, 2-sided ID); erase edges; auto page crop; job build; image preview; blank page suppression; automatically straighten			
Copy speed	A4 Black	Up to 25 cpm	Up to 30 cpm (with 8EP56AAE)	Up to 35 cpm (with 8EP57AAE)
	A4 Color	Up to 25 cpm	Up to 30 cpm (with 8EP56AAE)	Up to 35 cpm (with 8EP57AAE)
	A4 Black Duplex	Up to 18 cpm	Up to 22 cpm (with 8EP56AAE)	Up to 24 cpm (with 8EP57AAE)
	A4 Color Duplex	Up to 18 cpm	Up to 22 cpm (with 8EP56AAE)	Up to 24 cpm (with 8EP57AAE)
	First copy out A4 Black	As fast as 6.7 sec	As fast as 5.4 sec (with 8EP56AAE)	As fast as 4.8 sec (with 8EP57AAE)
	First copy out A4 Color	As fast as 8.9 sec	As fast as 7.6 sec (with 8EP56AAE)	As fast as 6.8 sec (with 8EP57AAE)
Copy resolution	Black (text and graphics): Up to 600 x 600 dpi; Color (text and graphics): Up to 600 x 600 dpi			
Maximum number of copies	Up to 9999 copies			
Copier resize	25 to 400%			
Copier settings	Booklet; Collation; Content orientation; Edge Erase; Image adjustment; Job build; N or Z-ordering; N-up; Text/Photo; Two-sided copy; Watermark; reduce/enlarge; Scan mode (book, 2-sided ID); Stamps; Image overlay; Image shift; Image preview; Paper selection; Blank page suppression; Scan to job storage; Automatically straighten; Automatically detect color/monochrome			
Fax speed	Up to: 33.6 kbps			
Fax resolution	Black (best): Up to 300 x 300 dpi (400 x 400 dpi for received faxes only); Black (standard): 203 x 98 dpi			
Fax Features	Fax memory: Up to 500 pages; Auto fax reduction supported: Yes Auto-redialing: Yes Fax delayed sending: No Distinctive ring detection supported: No Fax forwarding supported: Yes Fax phone TAM interface supported: No Fax polling supported: Yes (poll to receive only) Fax telephone mode supported: No Junk barrier supported: Yes Maximum speed dialing numbers: Up to 1000 numbers (each with 210 destinations) PC interface supported: Yes Remote retrieval capability supported: No Telephone handset supported: No			
Standard connectivity	1 Gigabit Ethernet 10/100/1000T network; 1 Hardware Integration Pocket 2nd generation (HIP2); 1 Hi-Speed USB 2.0 (host); 1 SuperSpeed USB 3.0 (device); 1 SuperSpeed USB 3.0 (host)			
Network capabilities	Standard (built-in Gigabit 10/100/1000T Ethernet)			
Wireless capability	Optional, enabled with purchase of a hardware accessory			
Mobile printing capability	Apple AirPrint™; Mopria™ Certified; Wi-Fi® Direct Printing; NFC Touch-to-print (optional); PrinterOn Print			
Memory	Standard:6 GB; Maximum:6 GB			
Processor speed	Quad Core (1.6GHz), Dual Core (1.4GHz) / Storage: Standard, embedded 500 GB hard disk drive / Hard disk: Standard, HP LaserJet 500 GB Hard Disk Drive; AES 256 hardware encryption; Secure erase capabilities (Secure File Erase-Temporary Job Files, Secure Erase-Job Data, Secure ATA Erase-Disk)			
Duty cycle (monthly)	A4:	Up to 110,000 pages	Up to 130,000 pages (with 8EP56AAE)	Up to 150,000 pages (with 8EP57AAE)
Recommended monthly page volume	Up to 20,000			

Technical specifications

Paper handling	Input Capacities: Up to 1140 sheets (Tray1: up to 100 sheets; Tray2: up to 520 sheets; Tray3: up to 520 sheets) Standard; Up to 10 envelopes; Input Capacities, Max: Up to 3140 sheets; Output Capacities: Up to 500 sheets Standard; Up to 100 sheets Transparencies; Duplex Options: Automatic; Envelope feeder: No; Standard paper trays: 3
Media types supported	Plain, HP EcoFICIENT, HP Matte 90g, Light 60-74g, Bond, Recycled, HP Matte 105g, HP Matte 120g, HP Soft Gloss 120g, HP Glossy 120g, Mid-Weight 96-110g, Heavy 111-130g, Mid-WtGlossy 96-110g, Heavy Glossy 111-130g, HP Matte 150g, HP Glossy 150g, Extra Heavy 131-175g, XHyGlossy 131-175g, HP Matte 200g, Card stock 176-220g, Light Paperboard 221-255g, Paperboard 256-300g, Color Transparency, Labels, Letterhead, Envelope, Prepunched, Colored
Media weight supported	Tray 1: 60 to 300 g/m ² ; Tray 2, 3: 60 to 220 g/m ²
Media sizes supported	Tray 1: A3, A4, A4R, A5, A5R, A6, RA4, B4 (JIS), B5 (JIS), B6 (JIS), Oficio, 8K, 16k, Postcard, Postcard (JIS), Envelope B5, Envelop C5, Envelope C6, Envelope DL; Tray 2: A4, A4R, A5, RA4, SRA4, B4 (JIS), B5 (JIS), 16k; Tray 3: A3, A4, A4R, A5, RA4, SRA4, B4 (JIS), B5 (JIS), Oficio, 8K, 16k
Media Sizes Custom	Tray 1: 98 x 148 mm to 297 x 432 mm; Tray 2: 139.7 x 210 mm to 297 x 364 mm; Tray 3: 139.7 x 210 mm to 297 x 432 mm
What's in the box	5Q90A HP Color LaserJet Managed MFP E786dn Printer; In box materials; Guide install; Flyer Regulatory; Power Cords; Label; Drums
Replacement cartridges ⁴	HP Black Managed LaserJet Toner Cartridge (ISO Yield 14,500) W9140MC; HP Cyan Managed LaserJet Toner Cartridge (ISO Yield 12,000) W9141MC; HP Yellow Managed LaserJet Toner Cartridge (ISO Yield 12,000) W9142MC; HP Magenta Managed LaserJet Toner Cartridge (ISO Yield 12,000) W9143MC; HP Black Managed LaserJet Toner Cartridge (ISO Yield 29,000) W9150MC; HP Cyan Managed LaserJet Toner Cartridge (ISO Yield 24,000) W9151MC; HP Yellow Managed LaserJet Toner Cartridge (ISO Yield 24,000) W9152MC; HP Magenta Managed LaserJet Toner Cartridge (ISO Yield 24,000) W9153MC
Product dimensions	W x d x h: 585 x 646 x 908.1 mm; Maximum: 1681 x 1196 x 1241 mm; 66.2 x 47.1 x 48.9 in
Product weight	~82.7kg;
Warranty features	1 Year Parts Only. Extended Warranty and support options vary by product, country and local legal requirements. Go to http://www.hp.com/support to learn about HP award winning service and support options in your region.
Energy star certified	Yes
Ecolabels	EPEAT® registered; Blue Angel; IT ECO Declaration
Control panel	10.1-in (25.65 cm) Color Graphics Display (CGD) with touchscreen; rotating (adjustable angle) display; Speaker
Display description	25.65 cm (10.1-in) touchscreen, WXGA Color Graphic Display (CGD)
Software included	No software solutions are included in the Box only on http://hp.com http://123.hp.com
Security management	Identity management: Kerberos authentication, LDAP authentication, 1000 user PIN codes, Optional HP and 3rd party advanced authentication solutions (e.g., badge readers); Network: IPsec/firewall with Certificate/Pre-shared Key authentication, Supports WJA-10 IPsec configuration Plug-in, 802.1X authentication (EAP-PEAP; EAP-TLS), SNMPv3, HT TPS, Certificates; Data: Storage Encryption, Encrypted PDF & Email, SSL/TLS (HT TPS), Encrypted Credentials; Device: HP Sure Start Secure Boot (BIOS Integrity Checking with self-healing capability), Intrusion Detection (Constant in-device monitoring for attacks), Whitelisting (loads only known good code), HP Memory Shield™; Embedded Trusted Platform Module, HP Connection Inspector; Security lock slot, USB port disablement; Security management: Compatible with HP Security Manager; Device Security Syslog Messages processed and accessible in Arcsight and Splunk SIEMs
Compatible operating systems	Windows 11; Windows 10; Windows 7; Windows Client OS; Android; iOS; Mobile OS; macOS 10.15 Catalina; macOS 11 Big Sur; macOS 12 Monterey; Chrome OS
Compatible network operating systems	Windows Server; Linux; Citrix; UNIX; Novell
Minimum system requirements	PC: 2 GB available hard disk space, Internet connection, or USB port, Internet browser. For additional OS hardware requirements see microsoft.com ; Mac: 2 GB available hard drive space, Internet connection, or USB port, Internet browser. For additional OS hardware requirements see apple.com
Power	Power supply type: Internal (Built-in) power supply; Power requirements: Input voltage: 220 to 240 VAC 50/60 Hz; Power consumption: 580 watts (25ppm, printing), 670 watts (30ppm, printing), 720 watts (35ppm, printing), 32.0 watts (ready), 0.8 watts (sleep), 0.2 watts (auto-off), 0.2 watts (manual-off)
Acoustics	Acoustic power emissions: 6.60 Bel(A), printing color simplex A4 at 25ppm; 6.70 Bel(A), printing color simplex A4 at 30ppm; 6.75 Bel(A), printing color simplex A4 at 35ppm; Acoustic Pressure Emissions (active, printing): 50 dB(A), printing color simplex A4 at 25ppm; 51 dB(A), printing color simplex A4 at 30ppm; 52 dB(A), printing color simplex A4 at 35ppm; Acoustic Pressure Emissions (active scan): 56 dB(A), ADF scan A4 at 90ipm; 58 dB(A), ADF scan A4 at 120ipm; 53 dB(A), ADF scan A4 at 60ipm
Operating environment	Operating temperature range: 15 to 30°C; Recommended operating temperature: 15 to 30°C; Storage temperature range: -10 to 40°C; Operating humidity range: 20 to 80% RH; Recommended humidity operating range: 20 to 80% RH

Messaging Footnotes

¹ HP's most advanced embedded security features are available on HP Managed and Enterprise devices with HP FutureSmart firmware 4.5 or above. Claim based on HP review of 2021 published features of competitive in-class printers. Only HP offers a combination of security features to automatically detect, stop, and recover from attacks with a self-healing reboot, in alignment with NIST SP 800-193 guidelines for device cyber resiliency. For a list of compatible products, visit: <https://www.hp.com/go/PrintersThatProtect>. For more information, visit: <https://www.hp.com/go/PrinterSecurityClaims>.

² Some features enabled by future HP FutureSmart firmware upgrades may not be available on older devices, if for example, physical product characteristics limit the functionality of the new feature.

³ HP Web Jetadmin is free and available for download at <https://www.hp.com/go/webjetadmin>

⁴ Based on HP review of competitive manufacturer's published app platform specifications as of April 2019. Only HP Workpath offers a combination of app validation upon submission plus automated re-validation of apps. To enable HP Workpath, some devices may require optional accessory or firmware to be upgraded. Subscription may be required.

⁵ HP Security is now HP Wolf Security. Security features vary by platform. For more information, visit <http://www.hp.com/wolfsecurity>.

⁶ Third-party certification based on Common Criteria Information Technology Security Evaluation ISO/IEC 15408 Standard requirements as of May 2019-2024. Certification applicable to HP Managed and Enterprise devices running HP FutureSmart Firmware version 4.5.1 and later. For more information: <https://www.commoncriteriaportal.org/files/epfiles/Certification%20Report%20-%20HP%20Intrusion%20Detection.pdf>

⁷ 100% outer fiber-based packaging and internal fiber-based cushions made from sustainably sourced certified and recycled fibers.

⁸ 100% of Original HP Toner Cartridges contain between 1-77% post-consumer or post-industrial recycled content. Does not include toner bottles or other products not listed. See <http://www.hp.com/go/TonerRecycledContent> for list. Hardware based: Post-consumer recycled is based on the definition set in the EPEAT standard for imaging equipment, IEEE 1680.2, and is expressed as percent of total weight of plastic.

⁹ HP voluntarily designs and tests its printing systems to prevent emissions that exceed Blue Angel and EPEAT eco-label guidelines. EPEAT® registered where applicable. EPEAT registration varies by country. See <http://www.epeat.net> for registration status by country.

¹⁰ HP printer, HP paper and Original HP supply - Blue Angel DE-UZ 219 Emissions Criteria.

Technical Specifications Footnotes

¹ Measured using ISO/IEC 24734, excludes first set of test documents. For more information see <https://www.hp.com/go/printerclaims>. Exact speed varies depending on the system configuration, software application, driver, and document complexity.

² Measured using ISO/IEC 17629. For more information see <https://www.hp.com/go/printerclaims>. Exact speed varies depending on the system configuration, software application, driver, and document complexity.

³ Scan speeds measured from ADF. Actual processing speeds may vary depending on scan resolution, network conditions, computer performance, and application software.

⁴ Approximate average yield based on ISO/IEC 19798. Actual yield varies considerably based on content of printed pages and other factors. For details, see <https://www.hp.com/go/learnaboutsupplies>.

