

A3 MFPS TO A4 WHY SWITCH?

BEFORE **AFTER**

YOU RARELY PRINT IN A3

For most businesses, the need for A3 capabilities is infrequent. In fact, just 1.5% of print volumes are A3

AGEING HARDWARE RELIABILITY ISSUES

Older devices become less reliable over time as print engines and parts wear out. Out of warranty hardware may be costly to fix.

UX & USABILITY PROBLEMS

Older A3 devices may not support common productivity apps that enable staff to complete tasks more quickly and effectively.

LARGE OFFICE FOOTPRINT

A3 MFPs are often larger and bulkier than A4 devices with a significant physical office footprint.

HIGHER TOTAL COSTS

A3 MFPs come with a heftier price tag, both in terms of initial investment and as the device ages, ongoing operational expenses.



BETTER FIT HARDWARE

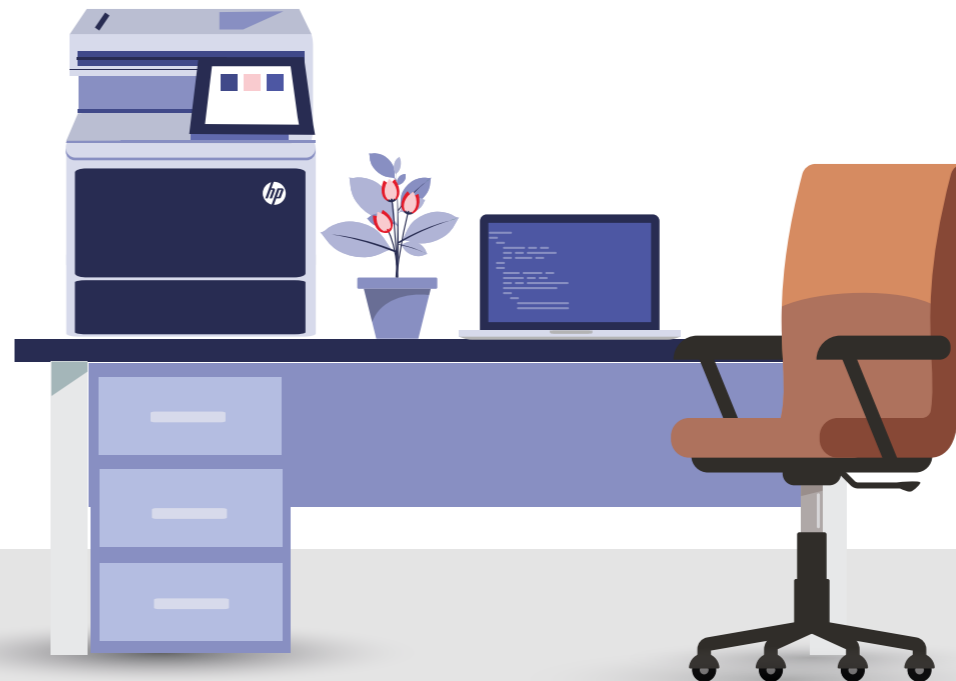
By switching to A4, you can match your equipment to your typical tasks, eliminating complexity and reducing costs.

SOLID RELIABILITY

HP's A4 MFP's feature award-winning reliability, gaining recognition from independent reviewers BLI as their most reliable A4 brand

MODERN USER EXPERIENCE

Modern A4 devices are designed with office workflows user-friendliness in mind. They have intuitive interfaces and support a vast array of on-device productivity apps.



COMPACT FOOTPRINT

By switching to A4, you free up valuable office floor space, which can be used for more productive purposes.

CHEAPER RUNNING COSTS

By switching to A4, you can save up to 50% on the total cost of ownership across all of your devices.*



*Based on total cost of ownership between 1. HP A4 Colour Managed MFP X58045dn and 2. HP A3 Colour Managed MFP E78625/78630/78635dn (4 trays)